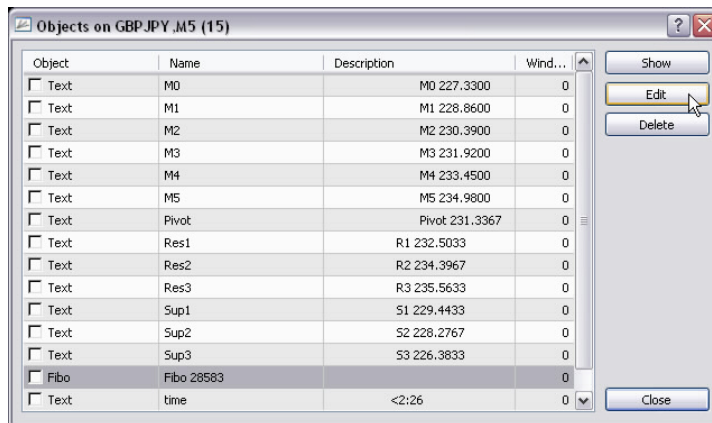
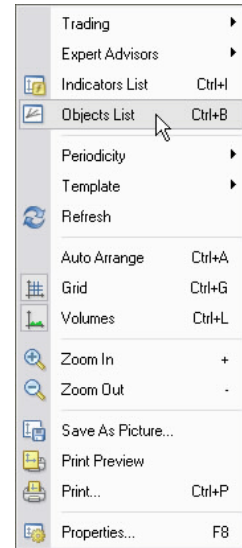


Configuring Fibonacci Settings in MetaTrader 4

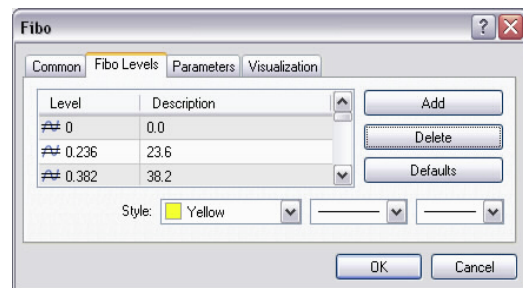
Please note: You will first need to place a Fib somewhere on your chart, in order to be able to modify the Fibo settings

- 1) Right click anywhere on your chart where there is open space
- 2) Select **Objects List** from the pop-up menu and left-click (*note: if you do not see the menu pictured to the right, then you accidentally clicked on a line or object on your chart instead of open space*)
- 3) Within the Objects window (below), select **Fibo** (*note: the number in the Name column may vary from photo*), and then click on the **Edit** button



- 4) On the Fibo properties screen (shown right), use the **Delete** button to remove all existing levels.
- 5) Use the **Add** button to add the following values:

Level	Description
0	0.0 - %\$
0.146	14.6 - %\$
0.236	23.6 - %\$
0.382	38.2 - %\$
0.5	50.0 - %\$
0.618	61.8 - %\$
0.786	78.6 - %\$
0.86	86.0 - %\$
0.942	94.2 - %\$
1	100.0 - %\$
-0.18	118.0 - %\$
-0.27	127.0 - %\$
-0.382	138.2 - %\$
-0.618	161.8 - %\$
-1.0	200.0 - %\$
-1.618	261.8 - %\$
-3.236	423.6 - %\$



- 6) Click **OK**



With these settings in place, you can now use The Fib Retracement button on your MT Toolbar, and see **both** Retracements and Extensions plotted simultaneously!